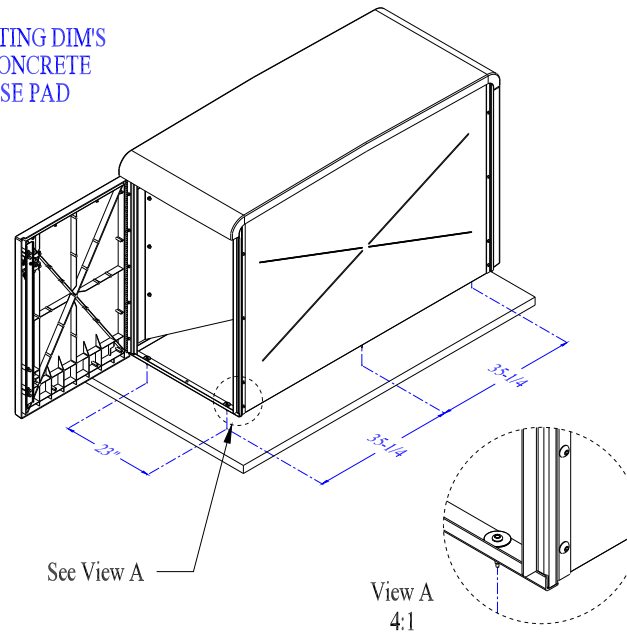
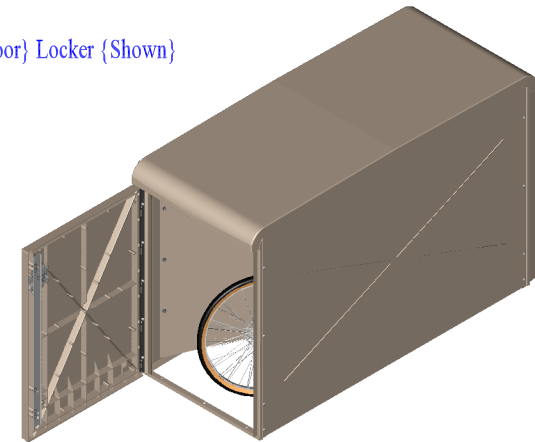


MOUNTING DIM'S
ON CONCRETE
BASE PAD



{2-Door} Locker {Shown}



CAPACITY IS FOR (2) STANDARD BIKES

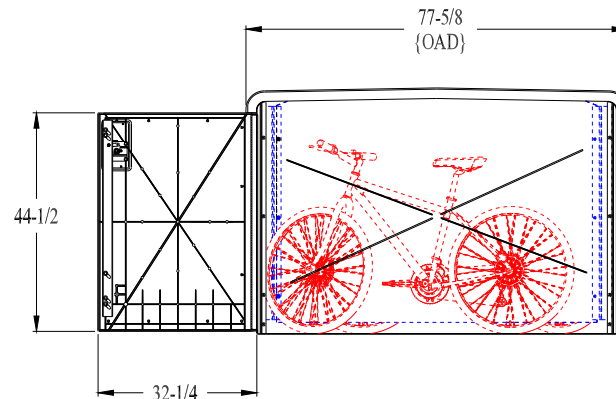
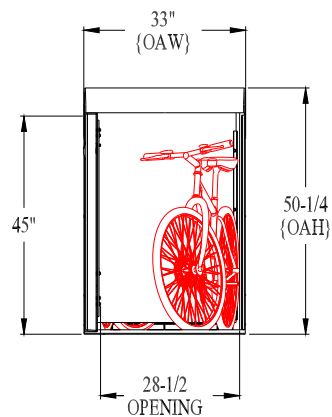
CONTRUCTION IS COMPRESSION MOLDED FIBERGLASS TOPS
& DOORS WITH HIGH STRENGTH STEEL SIDE PANELS &
DOOR FRAMES

STANDARD COLORS ARE TAUPE FRAMES & SANDSTONE
TOPS, DOORS & END PANELS. OTHER COLORS AVAILABLE

LOCKERS ARE AVAILABLE WITH CLEAR POLYCARBONITE
DOOR WINDOWS FOR SECURITY VIEWING

LOCKER UNITS AVAILABLE IN (2) DOOR OR (1) DOOR MODELS
WHICH PLACED SIDE BY SIDE FORM LOCKER BANKS

SHIPPING WEIGHT IS 460 LBS. OR 209 KG.



SHEET 1 OF 1	A	RELEASE FOR QUOTE		10/29/18
	REV	DESCRIPTION		DATE
TOLERANCES UNLESS OTHERWISE SPECIFIED: +/-	ECOPARK {1-TIER} LOCKER BANK			
			Cycle Safe 5211 CASCADE ROAD - SUITE 210 GRAND RAPIDS, MI 49546 www.cyclesafe.com	
	BOB SLYH	10/29/18		
	CHECKED	DATE		
	APPROVED	DATE		
	.X	.030		
	.XX	.010		
.XXX	.005			
ANGLE	1/2"			
REV	D	SM (M02) LOCKER BANK		REV A